



EXISTING LEGEND:

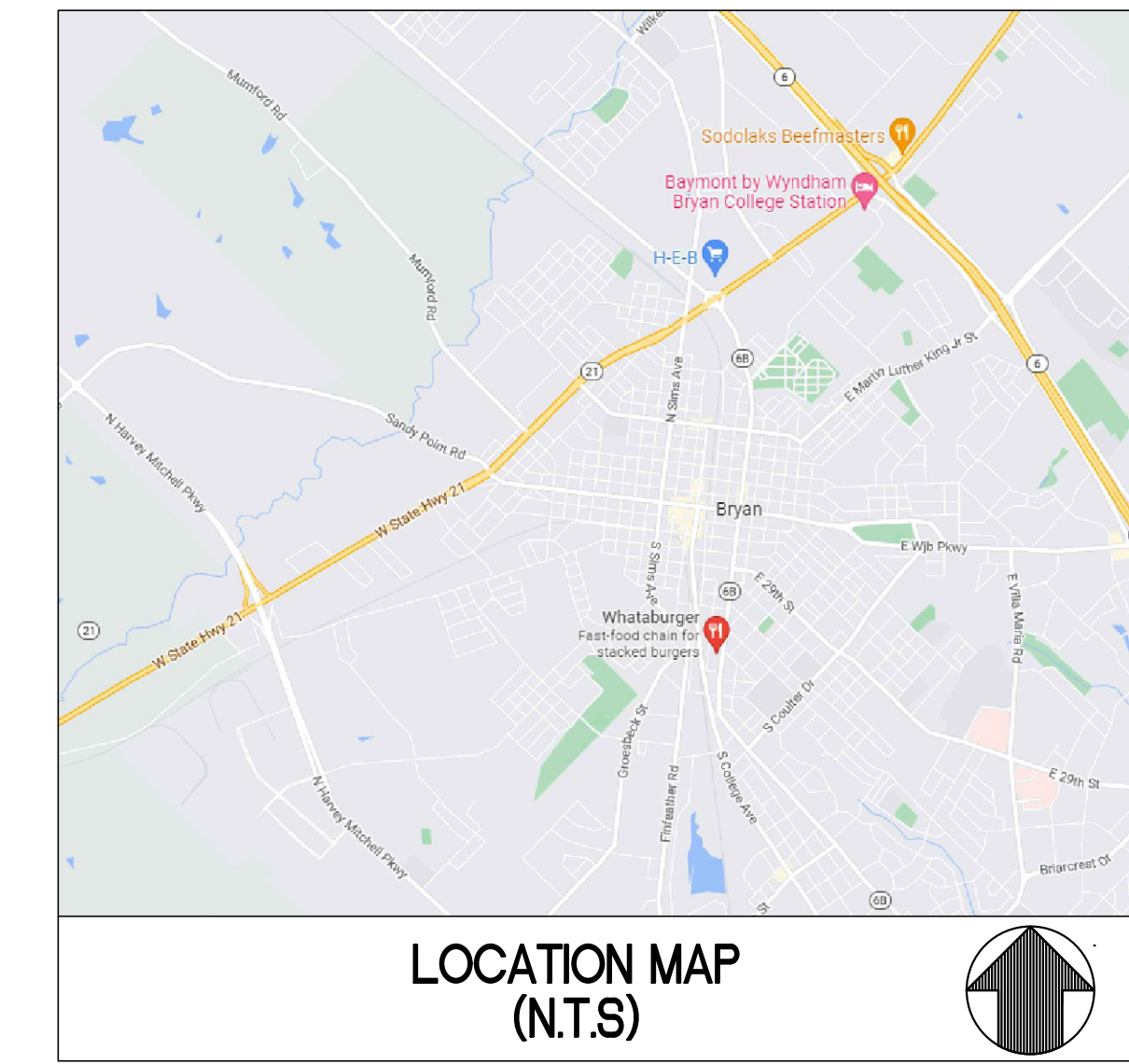
<ul style="list-style-type: none"> ○ MONUMENT FOUND ○ MONUMENT SET ⊗ MAG NAIL FOUND ⊗ MAG NAIL SET ⊗ X MARK AS NOTED ▲ R.R. SPIKE FOUND △ R.R. SPIKE SET ⬆ BENCHMARK R/W CONC. R/W MARKER (R) RECORD DATA (M) MEASURED DATA (C) CALCULATED DATA R/W RIGHT OF WAY BSL BACK SET LINE RCP REINFORCED CONC PIPE CMP CORRUGATED METAL PIPE PVC PLASTIC PIPE MTL METAL AGL ABOVE GROUND LEVEL S.F. SQUARE FOOT L/S LANDSCAPING FUEL TANK LID FLAG POLE UNKNOWN MANHOLE FROZEN MANHOLE UNKNOWN VAULT UNKNOWN VAULT METAL MAIL BOX BOLLARD BORE HOLE MONITORING WELL 	<ul style="list-style-type: none"> POWERPOLE GUY WIRE LIGHT POLE STREET LIGHT POLE ELEC. TRANSFORMER BURIED ELECTRIC OVERHEAD ELECTRIC ELECTRIC MANHOLE ELECTRIC METER ELECTRIC BOX GENERATOR ELECTRICAL VAULT ELECTRICAL PEDESTAL WATER LINE WATER MANHOLE WATER VALVE WATER METER HYDRANT BACK FLOW PREVENTOR FIRE DEPARTMENT CONNECTION WATER VAULT GAS VALVE GAS METER UNDERGROUND GAS MARKER GAS MANHOLE GAS LINE TRAFFIC POLE TRAFFIC MANHOLE TRAFFIC SIGNAL BOX TRAFFIC VAULT STOP SIGN SIGN 	<ul style="list-style-type: none"> SS SAN. SEWER LINE ○ SEWER MANHOLE ○ GREASE TRAP ○ CLEAN OUT SD STORM DRAIN LINE ○ STORM DRAIN MANHOLE ○ STORM INLET ○ CATCH BASIN ○ CURB INLET ○ TELEPHONE BOX ○ TELEPHONE PEDESTAL ○ TELEPHONE VAULT ○ TELEPHONE MANHOLE ○ TELEPHONE POLE ○ TELEPHONE LINE ○ OVERHEAD TELEPHONE ○ UNDERGROUND TELEVISION ○ CABLE TELEVISION ○ FIBER OPTIC CABLE ○ OVERHEAD CABLE ○ CABLE BOX ○ CABLE PEDESTAL ○ UNDERGROUND CABLE MARKER ○ TELECOMMUNICATIONS MANHOLE ○ TELECOMMUNICATIONS PEDESTAL ○ TELECOMMUNICATIONS VAULT ○ FIBER OPTIC VAULT ○ FENCE
---	---	---

PROPOSED LEGEND:

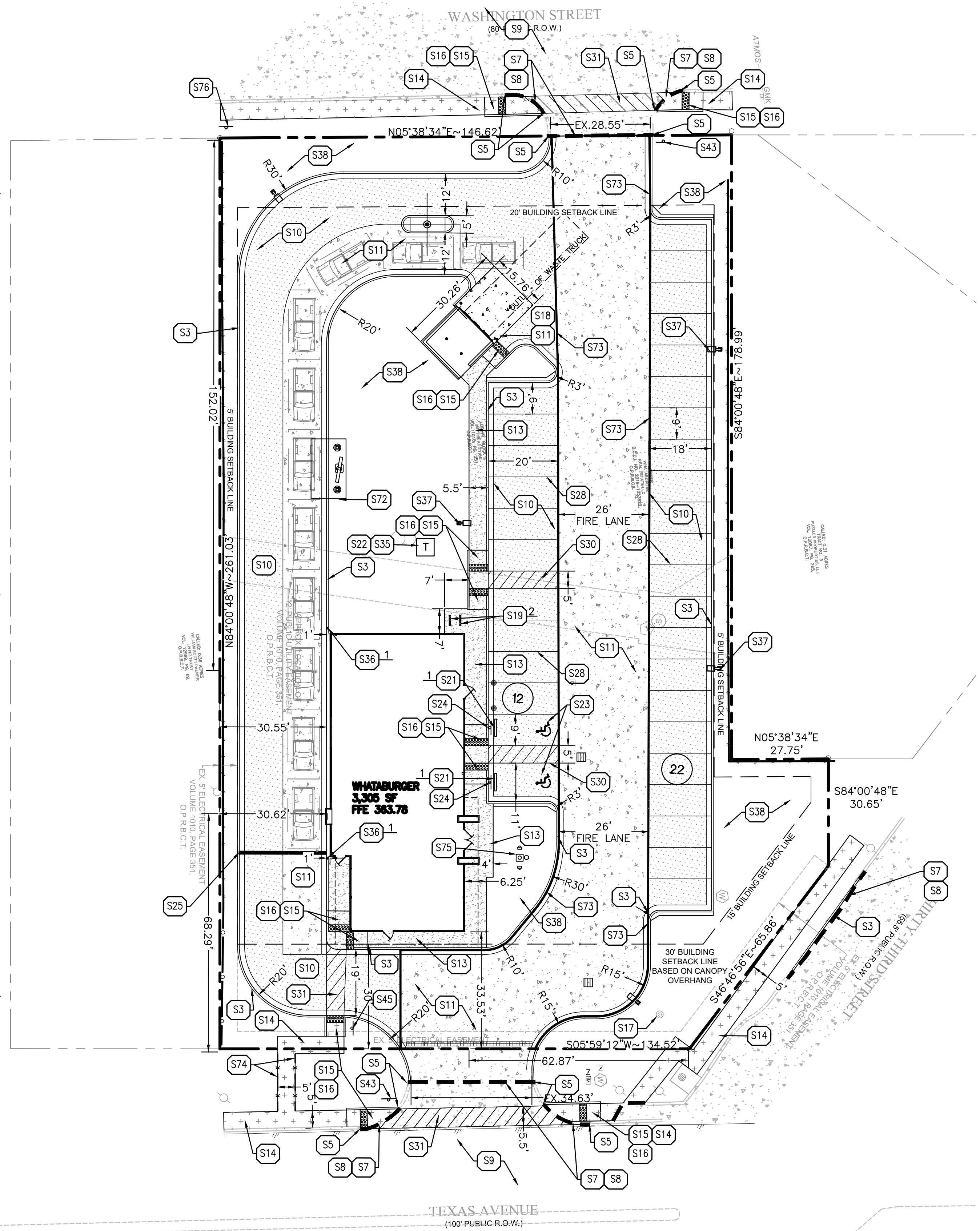
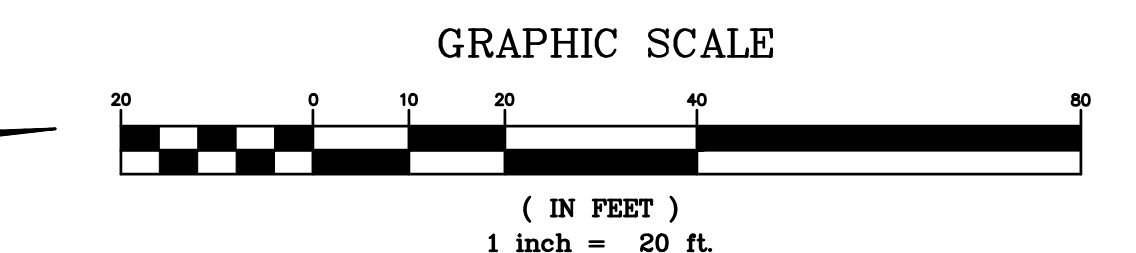
<ul style="list-style-type: none"> --- PROPERTY LINE --- PROPOSED CURB & GUTTER --- PROPOSED SITE LIGHT, SEE PHOTOMETRIC PLAN --- PROPOSED DRAINAGE STRUCTURES (SEE GRADING/DRAINAGE PLANS) ○ PROPOSED PARKING SPACES --- PROPOSED SAW CUT --- PROPOSED FIRE LANE --- PROPOSED STANDARD DUTY CONCRETE PAVEMENT. REFER TO PAVING PLAN. --- PROPOSED CONCRETE SIDEWALK PAVEMENT. REFER TO PAVING PLAN. --- PROPOSED HEAVY DUTY CONCRETE PAVEMENT. REFER TO PAVING PLAN. --- PROPOSED TXDOT CONCRETE SIDEWALK PAVEMENT. REFER TO PAVING PLAN.

SITE KEY NOTES

- S3 CURB AND GUTTER PER CITY STANDARDS. REFER TO DETAIL ON C-7.2.
- S5 TAPER CURB TO MATCH EXISTING.
- S7 LIMITS OF SAWCUT.
- S8 MATCH EXISTING PAVEMENT ELEVATION.
- S9 EXISTING PAVEMENT TO REMAIN.
- S10 STANDARD DUTY CONCRETE PAVING (PER PAVING PLAN)
- S11 HEAVY DUTY CONCRETE PAVING (PER PAVING PLAN)
- S13 CONCRETE SIDEWALK. REFER TO DETAIL ON C-7.2.
- S14 CONCRETE SIDEWALK. REFER TO DETAIL ON C-7.4.
- S15 SIDEWALK RAMP @ 8.33% MAX.
- S16 DETECTABLE WARNINGS PER ADA REQUIREMENTS
- S17 EXISTING PYLON SIGN (PER ARCH. PLANS)
- S18 DUMPSTER ENCLOSURE (PER ARCH. PLANS)
- S19 BICYCLE RACK. REFER TO NOTE FOR NUMBER.
- S21 CONCRETE WHEEL STOPS (SEE NOTE FOR NUMBER)
- S22 CONCRETE PAD (PER LOCAL CODES)
- S23 ADA ACCESSIBLE PARKING SPACE AND AISLE STRIPING & SYMBOL OF ACCESSIBILITY (TYPICAL-PER ADA AND LOCAL REQUIREMENTS)
- S24 ACCESSIBLE PARKING SIGN (TYPICAL PER ADA AND LOCAL REQUIREMENTS)
- VAN ACCESSIBLE PARKING SIGN (TYPICAL-PER ADA AND LOCAL REQUIREMENTS)
- S25 STOP BAR (PER LOCAL CODES) REFER TO DETAIL ON C-7.0.
- S28 PARKING STALL STRIPING (PER LOCAL CODES)
- S30 4" WIDE PAINTED STRIPES, 2" OFF CENTER @ 45' (PER LOCAL CODES)
- S31 PEDESTRIAN CROSSWALK STRIPING. (PER LOCAL CODES) REFER TO DETAIL ON C-7.0.
- S35 TRANSFORMER PAD LOCATION (SEE UTILITY PLAN)
- S36 BOLLARD (SEE NOTE FOR NUMBER) REFER TO DETAIL ON C-7.0.
- S37 LIGHT POLE (TYPICAL-PER LIGHTING PLAN)
- S38 LANDSCAPE AREA (PER LANDSCAPE PLAN)
- S43 "STOP" SIGN. REFER TO DETAIL ON C-7.0.
- S45 "DO NOT ENTER" SIGN. REFER TO DETAIL ON C-7.0.
- S72 EXTERIOR MENU BOARD. SEE ARCHITECTURAL PLANS FOR DETAILS.
- S73 FIRE LANE MARKING. ONE CONTINUOUS EIGHT INCH (8") RED STRIPE PAINTED ON THE DRIVE SURFACE BEHIND THE PARKING SPACES. ALL CURBING ADJOINING A FIRE LANE MUST BE PAINTED RED. RED STRIPES AND CURBS WILL CONTAIN THE WORDING "FIRE LANE - NO PARKING - TOW AWAY ZONE", PAINTED IN FOUR INCH (4") WHITE LETTERS.
- S74 PROPOSED ADA HANDRAIL ON C-7.3.
- S75 PROPOSED FLAGPOLE
- S76 PROPOSED GAS SITE RELOCATED



SITE DATA SUMMARY:	
WHATABURGER TRACT: (AFTER ROW DEDICATION)	0.91 ACRES/ 39,676 SF
ZONING	MIDTOWN-CORRIDOR DISTRICT (MT-C)
BUILDING	3,305 SF
FAR:	1:08.26
LOT COVERAGE:	0.67 (26,714 SF)
PARKING REQUIRED (WB):	34 (1 ACCESS. PARKING SPACES)
PARKING REQUIRED (AHJ):	13 (1 ACCESS. PARKING SPACES)
PARKING PROVIDED:	34 (2 ACCESS. PARKING SPACES)
PERVIOUS COVER:	12,281 SF
IMPERVIOUS COVER:	27,395 SF
REQUIRED BICYCLE PARKING	0
PROVIDED BICYCLE PARKING	2



Drawing Name: C:\Users\jgarcia\AppData\Local\Temp\AutoCAD\15171202202049 Master.dwg User: jgarcia Date: Apr 30, 2025 - 3:03pm Printed on: Apr 30, 2025 - 3:10pm by agarcia

